

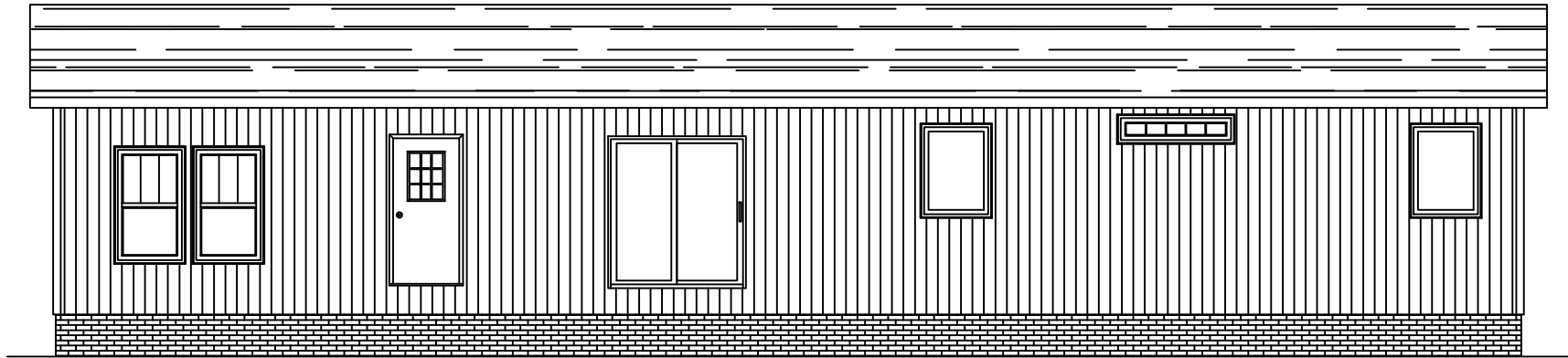
****ALL LOCATIONS ARE APPROXIMATE****
 HB—HOSE BIBB
 OSR—OUTSIDE RECEPTACLE

MATTERHORN

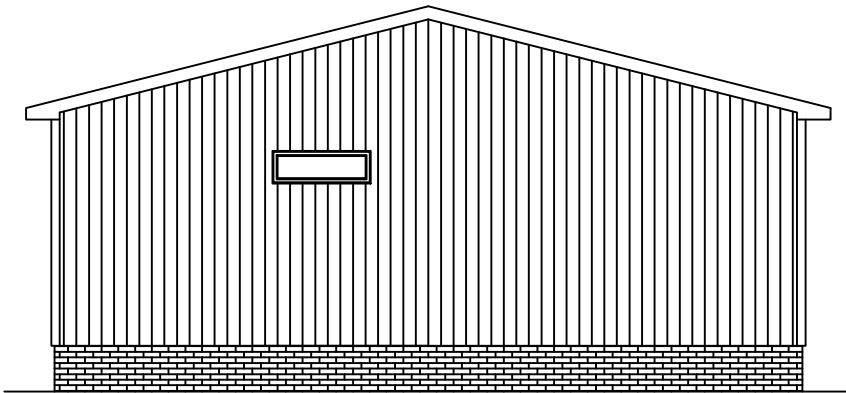
Model #: SAP32643A

Drawing #:

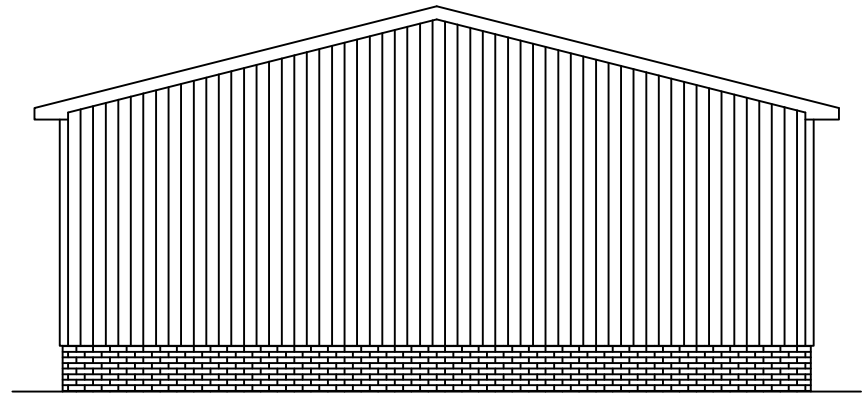
32M503



REAR ELEVATION



LEFT SIDE ELEVATION



RIGHT SIDE ELEVATION



FRONT ELEVATION

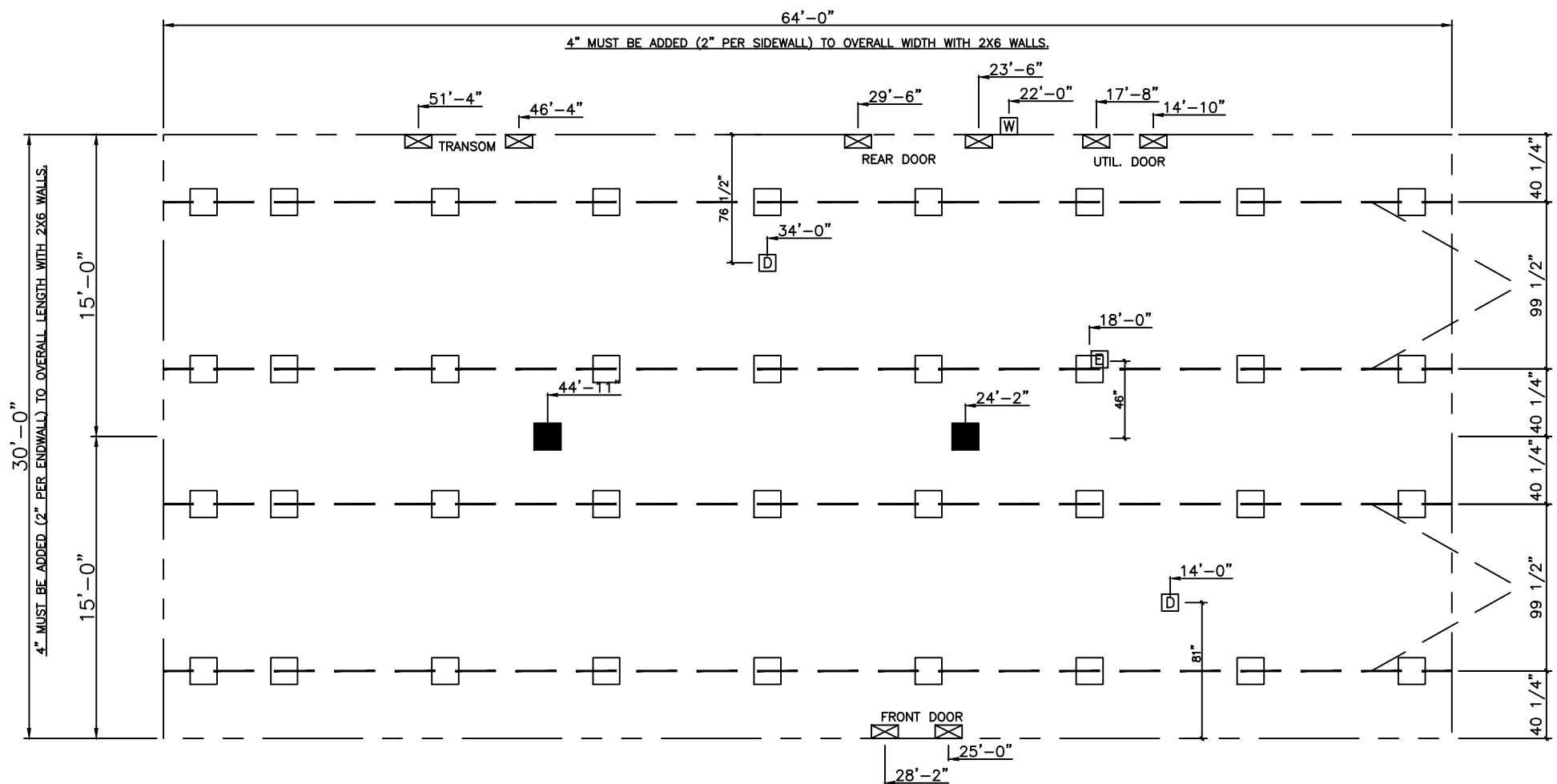
1920 SQ.FT. (STD PLAN "CONDITIONED")
 SQ.FT. (W/OPT. PORCH/RECESS "CONDITIONED")

CMH MANUFACTURING Product Designer: R. Bruner	Model #: SAP32643A Date: 2/13/13 Scale: NTS	Drawing #: 32M503
	32' x 64' Schult Alpine	
ELEVATION OPT.		

20 lb ROOF LOAD SIDEWALL OPENING PIER LOAD 32' BOX WIDTH	SIDEWALL OPENING (FT) REQUIRED PIER LOAD (LBS)					
	3	4	5	6	8	10
	1244	1413	1581	1750	2088	2425

PIER LOAD 20lb. ROOF LOAD		PIER LOAD 30lb. ROOF LOAD	
COLUMN PIER #	COLUMN LOAD (lbs)	COLUMN PIER #	COLUMN LOAD (lbs)
PIER # 1	5069	PIER # 1	7825
PIER # 2	5069	PIER # 2	7825

FOR 30 lb & 40 lb ROOF LOAD REFER TO TABLES 7b & 7c IN THE INSTALLATION MANUAL.



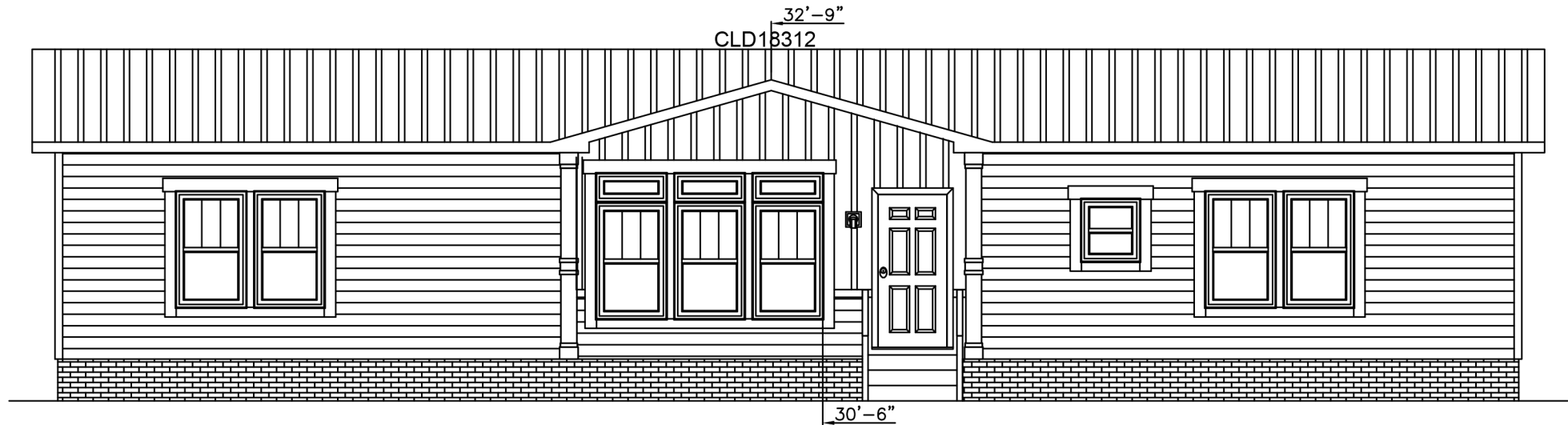
- GENERAL NOTES:
- PIER LOADS SHOWN ARE TO BE USED TO SIZE THE FOOTINGS BELOW THE MARRIAGEWALL FOR COLUMN SUPPORT PIERS. REFER TO TABLES 6b AND 6c IN THE INSTALLATION MANUAL FOR LOAD ON FRAME PIER FOOTINGS FOR HOMES THAT DO NOT REQUIRE PERIMETER BLOCKING. REFER TO TABLES 7b AND 7c IN THE INSTALLATION MANUAL FOR LOAD ON FRAME PIER FOOTINGS THAT REQUIRE PERIMETER BLOCKING. REFER TO TABLES 10 AND 10a TO DETERMINE FOOTING SIZE FOR ALL PIERS.
 - REFER TO TABLE 9 FOR PIER CONFIGURATION AND MAXIMUM ALLOWABLE HEIGHTS. CROSS REFERENCE THE PIER HEIGHT WITH THE MAXIMUM ALLOWABLE FLOOR HEIGHT LISTED IN THE FRAME TIEDOWN CHARTS (TABLE 18, 19, AND 20).
 - FLOOR WIDTH SHOWN IS FOR STANDARD PRODUCT ONLY. CONTACT THE MFG PLANT FOR SPECIFICATIONS OF OPTIONS ORDERED.
 - SERVICE DROP LOCATIONS IDENTIFIED ARE APPROXIMATE.
 - THE MAXIMUM SPACING FOR FRAME SUPPORT PIERS FOR 8" I-BEAMS IS 8 FEET, 10" & 12" I-BEAMS ARE 10 FEET.

SERVICE DROP LEGEND		PIER LEGEND	
[E]	= ELECTRICAL DROP	[□]	= SUPPORT UNDER MATING OPENING
[W]	= WATER INLET	[■]	= SUPPORT AT MATING COLUMN
[D]	= DWV PLUMBING DROP	[⊗]	= SUPPORT UNDER MATING WALL
[G]	= GAS INLET	[■]	= PIER PORCH/RECESSED ENTRY
		[□]	= PIER MAIN BEAM
		[⊗]	= PIER PERIMETER
		[●]	= TIE-DOWN SUPPORT

1920 SQ.FT. (STD PLAN "CONDITIONED")
SQ.FT. (W/OPT. PORCH/RECESS "CONDITIONED")

CMH MANUFACTURING	Model #: SAP32643A	Drawing #:
	Date: 2/13/13	Scale: NTS
Product Designer: R. Bruner		32' x 64' Schult Alpine

PIER LOADS



SAP32643A-32M503-METAL ROOF ELEVATION